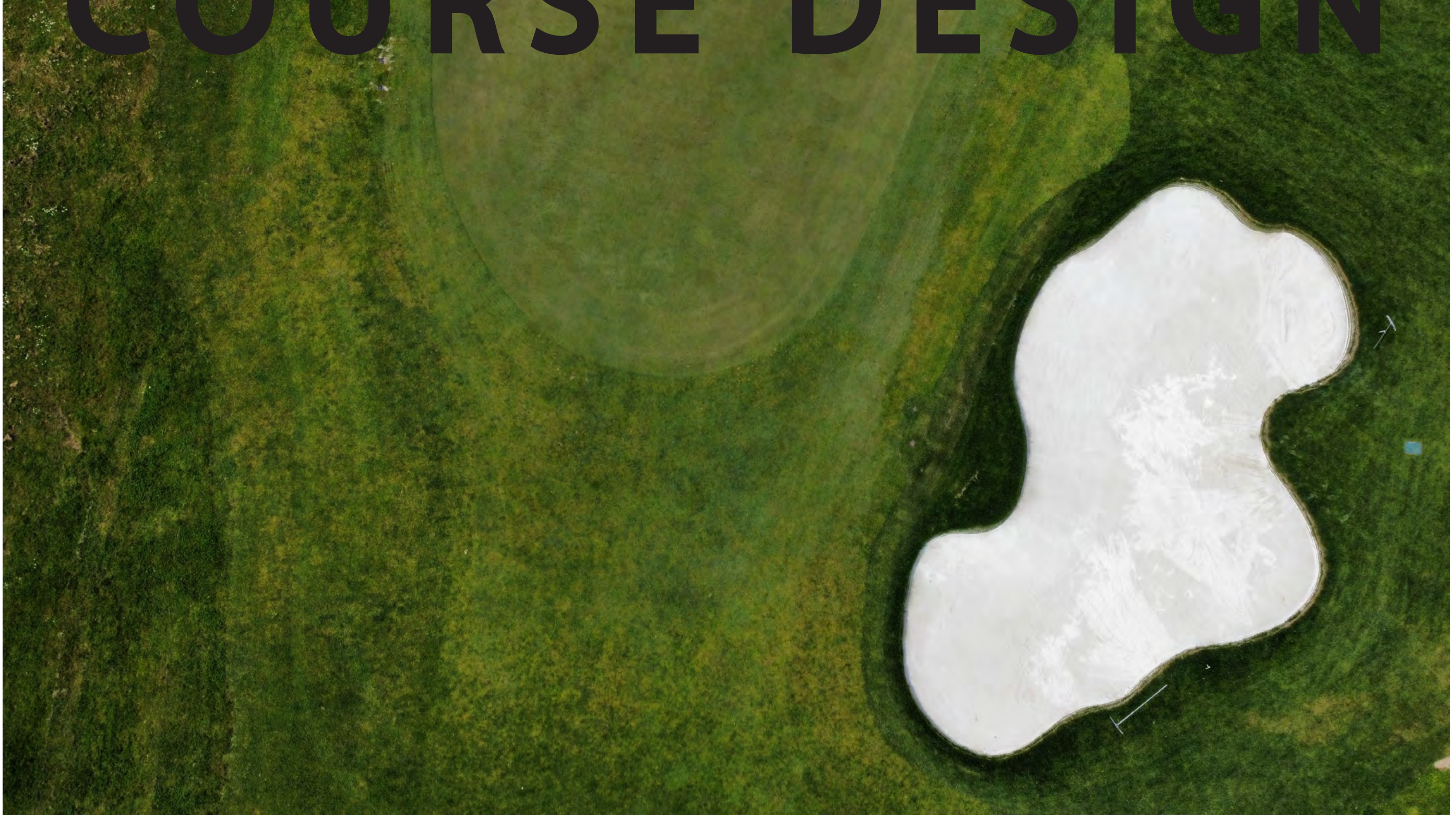


NWD GOLF COURSE DESIGN



2025



EUROPE OFFICE

+39 (338) 691 2610

Desenzano del Garda - Italy
pierfrancesco@nwdgolf.com

USA OFFICE

+1 (845) 707-5933

Montgomery - New York
garrett@nwdgolf.com

ASIA OFFICE

+91 (11) 41012880

New Dehli - India
vijit@nwdgolf.com





CONTENTS

01 ABOUT

02 VISION

03 ARCHITECTS

04 VALUES

05 PROCESS

06 WORK

ABOUT

Uniting the expertise of Vijit Nandrajog, Pierfrancesco De Simone, and Garrett Wasson, we champion a synthesis of golf's rich tradition with sustainable innovation. Our philosophy is anchored in creating courses that offer a dialogue between the player and the environment, fostering a sustainable future for the game. Each design reflects our dedication to enhancing player experiences, integrating with nature, and shaping golf's next chapter. Our approach is a commitment to excellence, sustainability, and the art of golf design, aiming to inspire and challenge golfers for generations.





VISION

At the core of NWD Golf lies a meticulously crafted process refined over decades to seamlessly blend artistry with functionality. Our journey begins with an immersive site analysis, where we deeply connect with the land's unique narrative, uncovering its potential to host a golfing masterpiece. This foundational understanding guides our project conceptualisation, transforming visions into detailed plans that balance innovation with the timeless spirit of golf.

We are committed to eco-conscious designs that preserve and enhance the natural beauty of the landscape.

We are partnering with clients and communities to bring shared visions to life, ensuring every course tells a unique story.

ARCHITECTS

Welcome to NWD Golf, a global design, experience, and ethos symphony resonating across diverse geographies. Our golf courses are not just spaces for play but living testaments to our commitment to innovation, sustainability, and legacy in golf architecture. With our projects spanning four continents, our collective 52 years of experience breathe life into each design with wisdom and foresight. Our ethos—anchored in eco-conscious design, creative innovation, revered heritage, and collaborative spirit—guides our journey across 11 countries, leaving a distinctive mark on over 120 courses worldwide. At the heart of NWD Golf are three architects, masters of their craft, who infuse quality and excellence into every aspect of our designs.

Pierfrancesco De Simone, Vijit Nandrajog and Garrett Wasson are not just designers; they are visionaries who envision the potential of each landscape. Each brings a unique perspective, united by a shared commitment to creating golfing experiences that are memorable, challenging, and beautiful. Their work is a testament to precision, innovation, and a relentless pursuit of perfection.





VALUES

Among all sports golf has a unique opportunity and responsibility to make a powerful difference. Thousands of grassroots facilities are enriching their greenspaces with people and nature.

NWDGOLF focuses the design fully considering the R&A key sustainability points:

- Working with the natural environment to enhance biodiversity and conserving natural habitats
- Protecting species and encouraging species diversity
- Providing connectivity through the landscape to link other green spaces via nature corridors
- Working with nature conservation bodies
- Conserving natural resources
- Managing waste efficiently following the waste hierarchy
- Managing healthy grass species, soil structure and drainage for sustainable course playability
- Increasing biological controls for pests and diseases

To protect the sport in the face of climate change, resource constraints and increased regulation, we are working closely with organisations responsible for managing courses to help realise these benefits.

PROCESS

PHASE 1: SITE VISIT & INVENTORY ANALYSIS

NWD Global Golf Design will meet with the Owner and Project Team to review project goals, objectives and key issues for the proposed golf course. The meeting will confirm the scope of work, design schedule and construction timeline.

NWD will visit the project site to study and review all aspects of the existing conditions. Our site visit report will be in the form of Site Inventory & Analysis drawings, which will be the basis of the design.

After completing the Site Inventory, NWD will create a Site Analysis. This looks at the Opportunities and Constraints of the site. This is the driving force for the suitability and integration of the golf course

PHASE 2: MASTERPLAN & DESIGN DEVELOPMENT

The Masterplan is the concept phase of design and includes routing the golf course and determining the final location and lengths of each hole.

The Masterplan spatially organizes the golf course on the site. Design development is the refinement and articulation of the Masterplan. It looks at every detail of each individual golf hole and designs strategy, aesthetics and sustainability into the golf course as a whole.

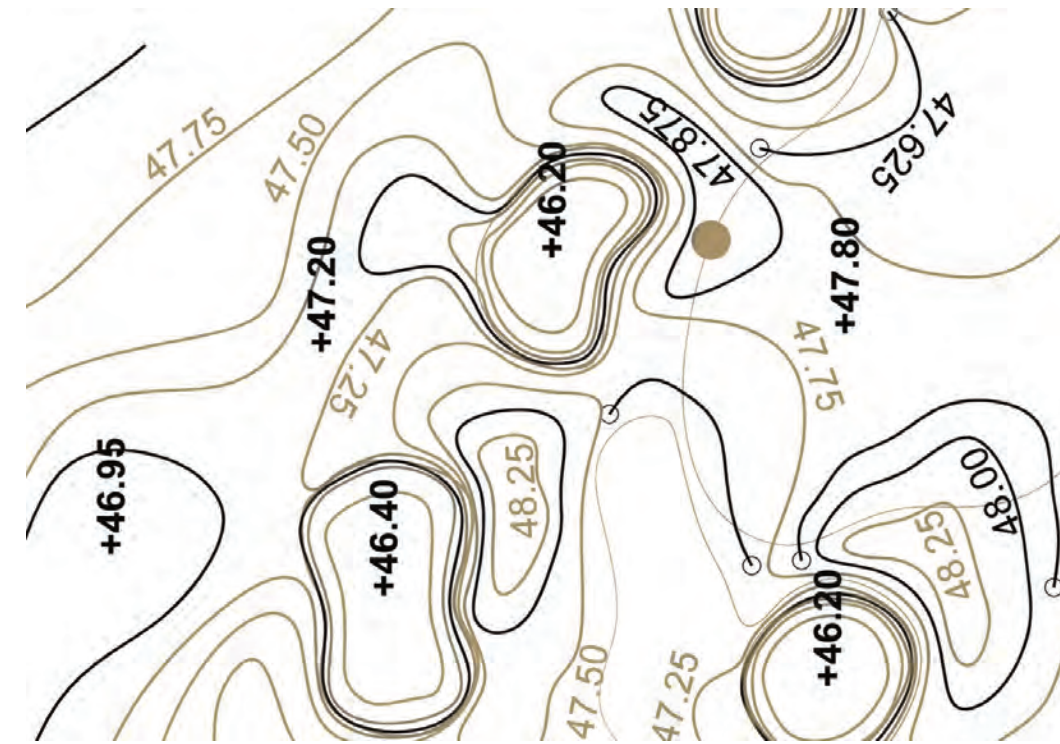
- Strategic Design Plans for each hole
- Yardage Book
- Illustrative Sketches & Perspectives
- Preliminary Bill of Quantities

DESIGN

ARCHITECTURE

GOLF

CONSULT



PHASE 3: CONSTRUCTION DOCUMENTS DEVELOPMENT

Project implementation is the process of converting the design ideas developed through Design Development into reality. This is done with Construction Documents, which consist of Construction Drawings and Specifications. These documents show great detail and describes to the golf course contractor how to create the final product.

- Site Plan
- Staking Plan
- Site Clearing Plan
- Grading Plan
- Drainage Plan
- Detailed Green Plans
- Cut/Fill Plan
- Erosion Control Plan
- Grassing Plan
- Cart Path Plan
- Tree Planting Plan
- Construction Details
- Specifications
- Bill of Quantities

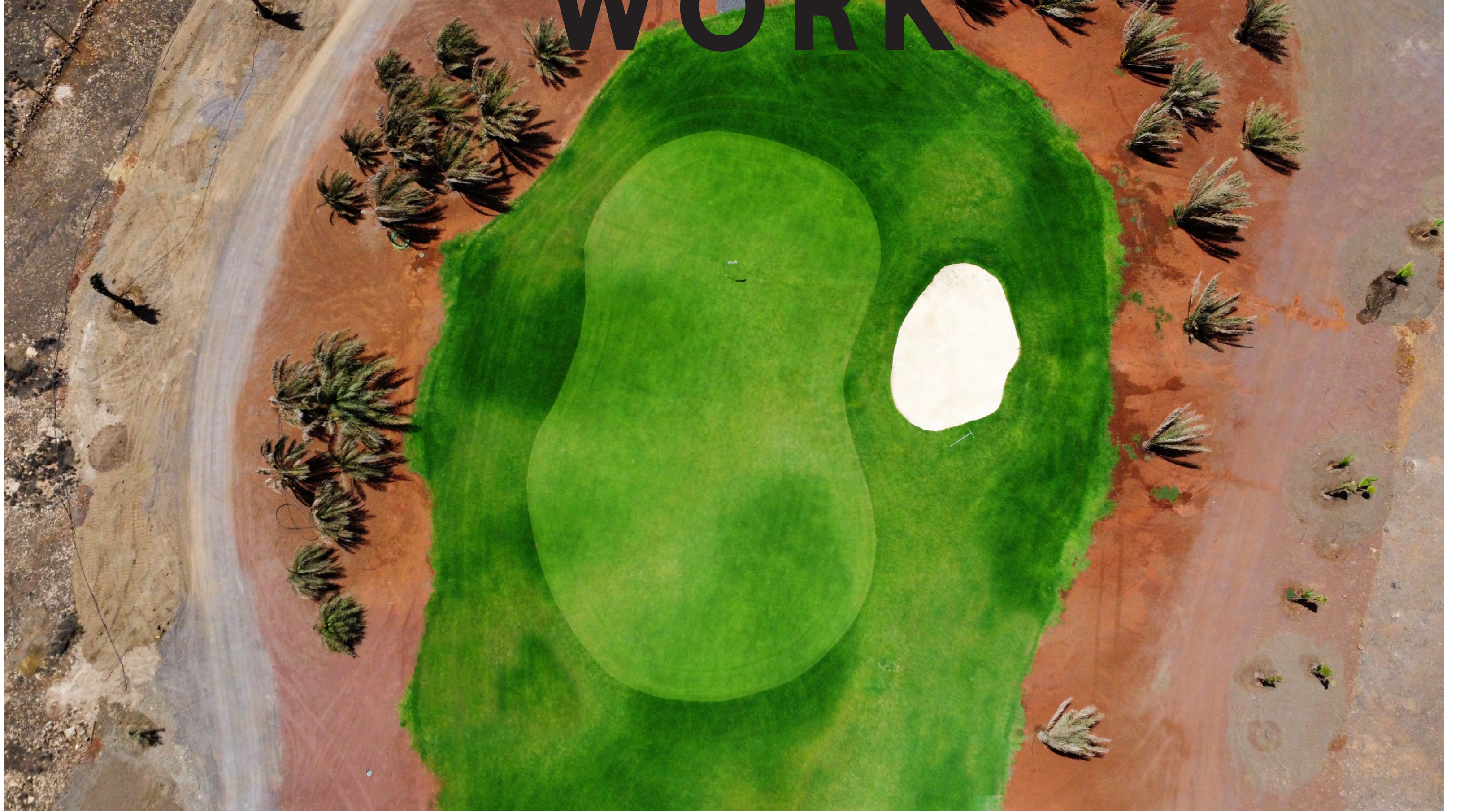
PHASE 4: CONSTRUCTION SUPERVISION & OBSERVATION

NWD Global Golf Design will provide support and advice during the construction bid process, which includes reviewing qualifications of golf course construction contractors, subcontractors and shapers.

With the Owner, NWD will review the construction bids and provide advice on selecting the best contractor for the project. NWD Global Golf Design will make regular site visits throughout the construction process to ensure that the project is being built in accordance with the construction documents and the overall vision of the project.

During the site visits, NWD will review all construction work and make any necessary adjustments to the design, in the field, to ensure the best golf course is built.

WORK





01

FRANCIS BYRNE GOLF COURSE WEST ORANGE - UNITED STATES

Renovations have restored many of the classic template holes and features that have shaped golf architecture since the early 1900's.

Holes such as the Road Hole(#1), The Biarritz (#2), The Short (#5) and The Eden (#14) are classic templates for many of the famous holes across the world today.

Many of the unique features of this course harken back to the early days of golf in America and give you a great look at golf history, but with a modern twist.

This beautiful course in West Orange features deep bunkers, hilly topography and rolling greens that combine to create a wonderfully challenging layout that measures nearly 7,000 yards and offers public golfers the rare opportunity to play a course from golf's Golden Age of Design.



02

GARDAGOLF COUNTRY CLUB

SOIANO DEL LAGO - ITALY

Gardagolf CC is one of the the most prestigious golf course in Italy, often in the the national top 10, four times host of an European Tour , one LET and several others.

All bunkers were reshaped, most of them in a new position, to make them in line with the shot length of modern scratch players.

New bunkers' position will make the course more enjoyable for players with an higher handicap, as hazards now affect less short hitter's game.

The new layout fits better with the growing trees that border all holes. The new design is much better integrated with the surrounding nature and landscape.

Bunker edges were built with ECOBUNKER technolgy to avoid erosion and for an easier maintainance process.





03

VIVEIRO COUNTRY CLUB

SAL ISLAND - CAPE VERDE

The 18 hole golf layout was built on the Island of Sal, Cape Verde's most popular tourist destination. The ground was covered with hard rocks that were very difficult to excavate so the decision was taken to build on top of the existing levels, moving a more suitable material into place, found in limited areas of the site. The area of play was covered with sand, transported from a local quarry, then amended with organic material.

The course features Rainbird irrigation, installed by the Viveiro Country Club grounds crew. The course is a great example of sustainable golf in a desert environment as water is recycled from the resorts and hotels of Santa Maria, the main village on the island.

From the elevated clubhouse, the first nine holes are located on the southern side of the site, near the main road and hotels and the second nine move towards the Atlantic Ocean, with breathtaking views and challenging golf.





04

BELDIH GOLF CLUB

JAMSHEDPUR- INDIA

Founded in 1922, the Beldih Golf Course is happily in the midst of verdant and dense Neem, Gulmohar, Kachnar and Semul trees and the oldest part of the Presidio Forest, making it the most sought-after golf course in this region.

It is designed in parkland style and has several trees and fairways along a thickly forested tree cover. It has a nine-hole course along with a clubhouse that features two par-3s, five par-4s and two par-5s holes.

In fact, it has challenging holes beginning with just under 150 yards and going up to 400 yards. It accommodates golfers of all ages—from kids to weekend golfers to professional players.





05

CHANDIGARH GOLF CLUB CHANDIGARH - INDIA

The Chandigarh Golf Club was laid out in 1962, synonymous with the master plan envisaged by LeCobusier and his vision of Chandigarh.

The foundation stone for Club House was laid by Sh. Dharam Vira on April 24th, 1969. The club shares mutual serenity as it hugs the famous Sukhna Lake and the residences of Punjab and Haryana Governors in the pristine Sector 6 of Chandigarh, India. Developed to international standards, the 18 hole course spans 7,202 yards

The Chandigarh Golf Club is the only one in Northern India having floodlit 9 hole course and floodlit driving range also called the Cradle of Indian Golf. Among its most celebrated sons are the reigning Asian Tour king of greens Jeev Milkha Singh, who became the first Indian to qualify for the European and Japanese PGA Tours



06

NOIDA GOLF COURSE

NOIDA - INDIA

Opened for play in 1993, Noida Golf Course is shoehorned into a 97-acre site to the southeast of New Delhi and there's a large monument by the 16th teebox commemorating the 1803 Battle of Delhi between the British and Marathas.

This very tight, tree-lined layout measures almost 7,000 yards from the back tees, playing to a par of 72, with holes arranged as two returning nines. Highlights on the outward half include the first of the par threes at the 205-yard 3rd (with a large bunker to the left of a triangular-shaped green); the left doglegging par four 6th (with out of bounds to the right of the hole); and the par four 9th which narrows considerably as it reaches the green.

Among the more notable holes on the inward half, there's the left doglegging par four 13th (stroke index 2) which plays to a heavily bunkered green.





07

GRAND HARBOUR GOLF CLUB

VERO BEACH - UNITED STATES

Grand Harbor Golf & Beach Club recently completed a redesign and renovation of its renowned River Course, giving members a brilliantly updated golf experience among pristine water vistas.

The course proudly celebrates its original designer, Joe Lee, while adding elements of sustainability and design updates to meet the demands of the modern golfer.

Designed with picturesque views and a well-balanced layout, this course now challenges experienced golfers rather than penalizing beginners.





08

TOLLYGUNGE CLUB

CALCUTTA - INDIA

The golf course that meanders its way through century-old trees, before finishing at a clubhouse building over 200-years-old is full of charm and a grace rarely experienced in modern golf. For travellers, Tollygunge Golf Club champions the experience of what the game was like in India 100 years ago.

Rambling old buildings, beautiful restaurants and bars and a kaleidoscope of non-golfing activities await the golfer staying at Tollygunge. Originally a Royal Park named Bara Bagh, the site has a history dating back to the mid-1700s. But it is now, with Kolkata a city of 15 million people, that this park environment has cemented its presence as an oasis in the second largest city in India.





09

POIANO GOLF CLUB

GARDA - ITALY

Poiano Golf Club is located in the hills surrounding the village of Garda, on the eastern shores of the most beautiful lake that carries the same name.

The golf course is carefully crafted following the slopes and the valley that form the natural landscape.

The golf course is set in a natural environment, it is surrounded by oak woodland, olive trees and cypress.

The club has a wide driving range, and a large short game practice area.



10

PRACTICE FACILITIES & PAR 3 COURSES

The modern practice facility has become somewhat of a destination.

Some have high tech amenities like Track Man and Learning Centers with video and swing analysis while others have food & beverage service.

The epicenter of the need for the evolution from a simple driving range/putting green to a modern practice facility is technology. Expanding golf technology is the driving force behind changes in the average practice facility.

NWD GOLF designs modern practice facilities with all the latest technology for a better value for the club and golfers.





11

SAVUDRJIA CLIFFS GOLF CLUB

SAVUDRJIA - CROTIA

The course, designed on the northern shores of the Istria peninsula, has now the masterplan completed.

Renderings show the great potential of the golf course in a great location.

The layout has taken the most from the views towards the Adriatic Sea and the dense woodland that covers large area of the site.



